



Rose Cottage, ,
Hereford HR2 8BB
£795 Per



TO LET



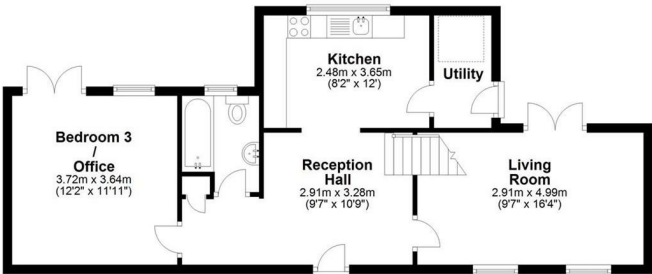
PROPERTY SUMMARY

A characterful two/three bedroom stone cottage situated on a 'no through' lane in the peaceful hamlet of Little Birch which is approximately 1.5 miles from the A49. The property comprises utility area, kitchen, reception hall, living room with wood burning stove, bathroom to the ground floor, bedroom three/office, two bedrooms, spacious landing area, garden, ample parking and LPG gas central heating.

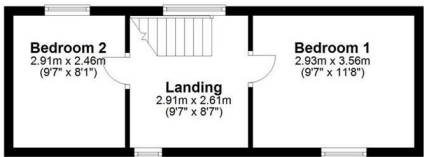
NOTES & COMMENTS

DIRECTIONS

Ground Floor

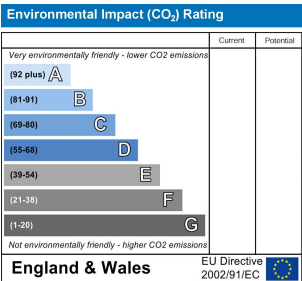
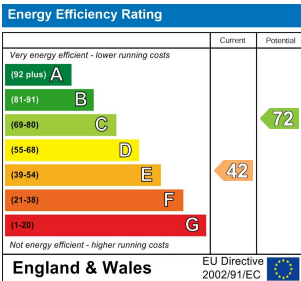


First Floor



Total area: approx. 83.7 sq. metres (901.0 sq. feet)
Floorplans are for guidance purposes only and should not be taken as accurate. Brookes Bliss Ltd
Plan produced using PlanUp.

FEES



Brookes Bliss

These particulars are offered on the understanding that all negotiations are conducted through this company. Neither these particulars, nor oral representations, form part of any offer or contract, and their accuracy cannot be guaranteed.

46 Bridge Street, Hereford, Herefordshire HR4 9DG
Tel: 01432 343800
Lettings@brookes.bliss.co.uk

brookesbliss.co.uk

